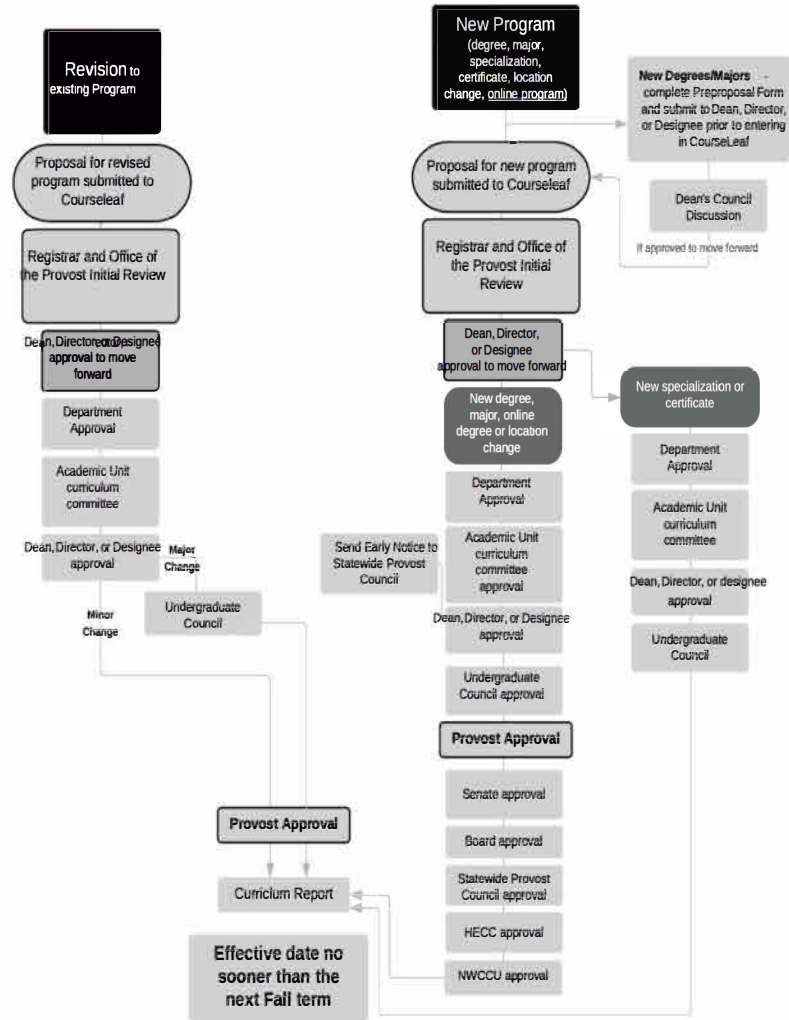


Undergraduate Program Approval Process





UNIVERSITY OF
OREGON

BALLMER INSTITUTE

The Challenge



UNIVERSITY OF
OREGON

BALLMER INSTITUTE

A Bold Vision for Workforce Innovation

Create a new profession that meets the behavioral health needs of children and adolescents, so they can truly thrive.

An Expanded & Diverse Workforce

Child behavioral health specialists are bachelor-level professionals who promote the behavioral health and wellness of children and adolescents across identities and abilities, from a variety of family structures and backgrounds, in schools, public health, and other health care settings.

A Workforce for Promotion & Prevention

Promotion includes managing emotions and stress, developing positive interpersonal relationships and social media habits, responsible decision-making, and goal setting.

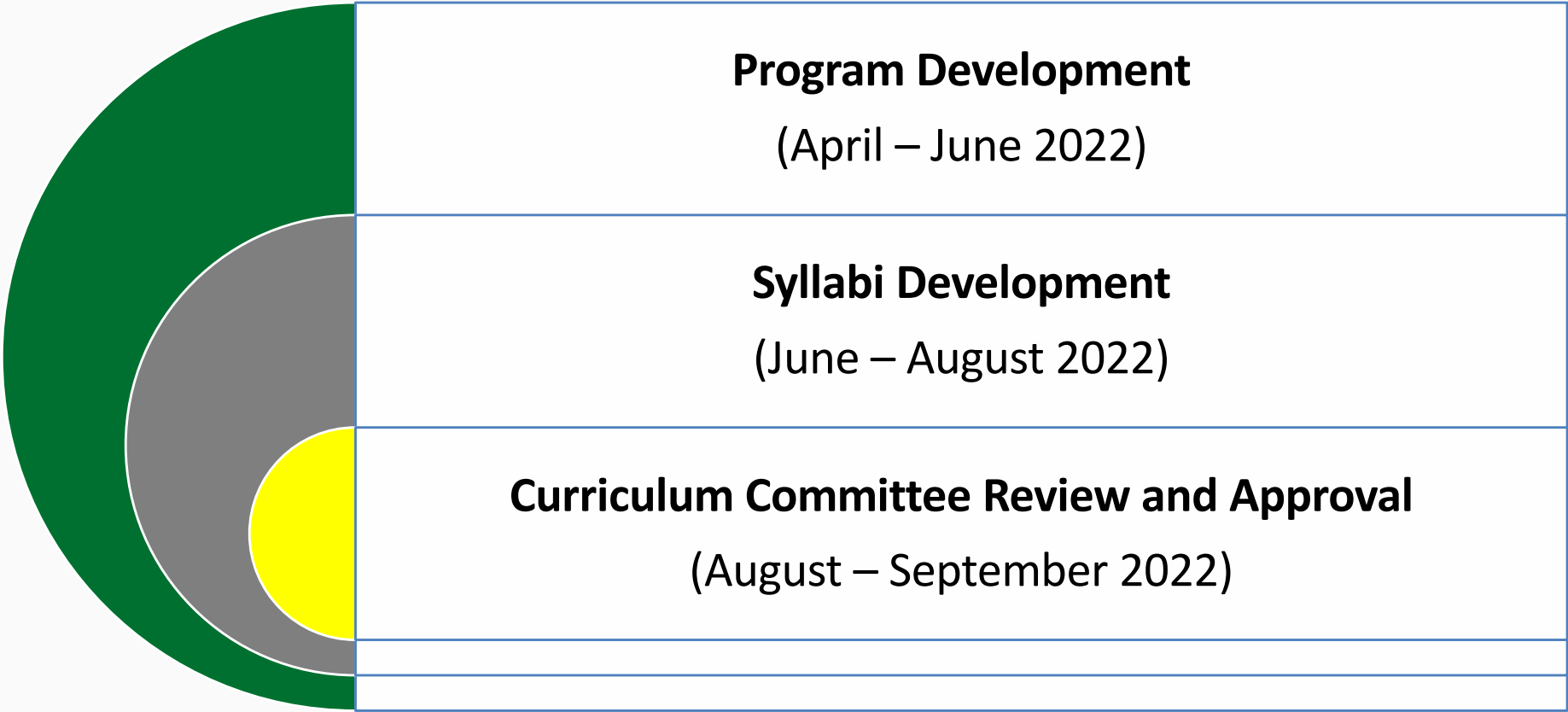
Prevention involves the early detection of the development of behavioral health problems in children and adolescents and implementing evidence-based individual, family, or group interventions to alleviate problems before they become severe.



UNIVERSITY OF
OREGON

BALLMER INSTITUTE

Ballmer Institute CBHS Development Timeline



Leveraging Faculty Expertise



Steering Committee – Drs. Jenn Pfeifer, Beth Stormshak, Julie Wren, Randy Kamphaus

Curriculum Committee – Drs. Maureen Zalewski, Beth Stormshak, Jenn Pfeifer, Atika Khurana, Nick Allen

Syllabi Development Team – Drs. Alayna Park, Ruth Ellingsen, Nick Allen, Atika Khurana, Jean Kjellstrand, Anne Mannering, Sara Schmitt, Sohna Shook, Karrie Walters, Julie Wren, and Ana Hernandez (GE)

Curriculum Development Team – Drs. Nick Allen, Elliot Berkman, Ruth Ellingsen, Atika Khurana, Leslie Leve, Laura Lee McIntyre, Alayna Park, Jenn Pfeifer, Geovanna Rodriguez, Beth Stormshak, Angie Whalen, Maureen Zalewski, and Ana Hernandez (GE)

Co-Creation through Outreach

(Partial list of Stakeholder/Partner Meetings)

Educational Institutions/Schools

- Portland Public Schools
- Superintendents for Lane ESD, Bethel, Springfield, and Eugene 4J
- Parkrose Schools
- David Douglas Schools
- Clackamas Community College
- Mount Hood Community College
- Portland Community College
- Serendipity Center
- PSU School of Social Work
- The Muslim Education Trust
- OHSU Pediatrics and Psychiatry
- Kairos PDX

Faculty Curriculum Development

Team Guest Speakers

- OHSU School of Nursing
- Children's Institute
- Portland Public Schools, Student Success and Health Department
- Muscogee County (GA) Schools Prevention Services
- Northwest Portland Area Indian Health Board
- Teacher Standards and Practices Commission
- UO Autism Advocacy Group
- HEDCO Institute

Health/Research/Community

Organizations

- Behavioral Health for Multnomah County
- OYEN Emotional Wellness Center
- Edvance Life Skills
- Oregon Research Institute
- Unity Center for Behavioral Health at Legacy Emanuel
- Lines for Life
- Multnomah Youth Commission
- Concordia Neighborhood Association
- Adelante Mujeres
- Asian Pacific American Network of Oregon
- Coalition of Communities of Color
- Black Parenting Initiative

Professional Groups/Societies

- Oregon School Psychology Association
- Oregon Association of Social Workers
- Council of Oregon School Administrators (COSA)
- International Dyslexia Association – Oregon Branch
- Oregon School Counseling Association
- Oregon Education Association
- American Psychological Association



UNIVERSITY OF
OREGON

BALLMER INSTITUTE

BA/BS in Child Behavioral Health

Students must complete their general education and bachelor degree requirements prior to admission to the major. Both BA and BS are accepted paths to the degree.

PREREQUISITES

- **Introductory course to psychology or human services** (beyond 101)
Recommended Courses: FHS 213 Issues for Children and Families; FHS 215 Exploring Family and Human Services; PSY 202 Mind and Society; Other courses by approval
- **Human Development Course**
Recommended Courses: FHS 328 Human Development in the Family Context; PSY 308 Developmental Psychology; Other courses by approval
- **DEI Course in Human Services** (or related):
Recommended Courses: FHS 216 (Diversity in Human Services); Other courses by approval (see courses here: <https://catalog.uoregon.edu/genedcourses/#usdifferenceinequalityagencytext>)



90 Credits across 4 Core Domains

KNOWLEDGE CORE

Demonstrate an understanding of health equity and promotion, risk and protective factors in children and adolescents across identities, abilities, and family backgrounds/structures.

DIVERSITY, EQUITY, INCLUSION CORE

Demonstrate knowledge of prevention and intervention theory, and the ability to identify evidence-based practices and programs, particularly addressing the needs of historically underserved populations.

PROFESSIONAL CORE

Demonstrate professionalism across service settings, including understanding of professional ethics, and appropriate consultation with practitioners

SKILL DEVELOPMENT CORE

Demonstrate foundational intervention skills with children, adolescents, and families from all communities, including culturally responsive and affirming delivery of services and evidence-based programs.



Program Completion Requirements

- Students must complete the entire program successfully to graduate with a child behavioral health degree (i.e., all field and course requirements)
- Students who are not successful in the program and/or choose not to continue in the major will have the opportunity to:
 - Return to Eugene and pursue a different academic major, OR
 - In partnership with the Family and Human Services (FHS) program (housed in the College of Education), we are exploring opportunities for these students to have the option of completing a FHS degree at the UO Portland campus.



Post Completion

Workforce

- Exploring licensure pathways with the Teacher Standards and Practices Commission and the Oregon Health Authority
- Exploring workforce partnership with educational and health employers (letters of support have been provided)
- Engaged in efforts with US Finance Committee around sustainable funding and reimbursement for growing behavioral health professionals
- Synergistic efforts are occurring in Washington and California

Graduate School

- Exploring partnership and pathways with UO masters programs
 - Online Masters in Psychology
 - Masters in School Psychology
 - Masters in Couple and Family Therapy
 - Masters in Prevention Science
- Exploring partnership and pathways with other Oregon Public Institutions
 - OHSU, School of Nursing
 - PSU, School of Social Work
 - OSU, School of Counseling



\$425 M

Gift from Connie and Steve Ballmer

First Bachelor's degree program of its kind
Child Behavioral Health

10

Tenure-related faculty to expand
research and development of new innovations

Prepare candidates in the most
populous area of Oregon
(Former Concordia University)

15

Clinical faculty to work in schools and
supervise clinical training of students

Scholarships for Oregon Residents
to create a diverse workforce

\$100 M

Endowment for Scholarships



“When we act together, ***all children can thrive***, but we have to address the systemic racial and geographic disparities as we do so to make sure that everyone has the opportunity to reach their full potential and live their best life.”

- Jenifer Wagley, Executive Director of Our Children Oregon



UNIVERSITY OF
OREGON

BALLMER INSTITUTE

